

POSITION INDICATOR

DISPLAY1

Model : DISPLAY1

DATA SHEET

- ❖ 7 Segments Display.
- ❖ Red colored Display.
- ❖ Binary Signalization.
- ❖ Active high or Active low inputs.

Description

The DISPLAY1 is a Position Indicator for elevators, it is designed to display current floor position of the elevator.

The DISPLAY1 is programmed to display all figures from figure Zero to figure Nine only. Display in red color.

Wire connection to DISPLAY1

Y1...Y5 : 5 Bit Binary combination for floor display selection.

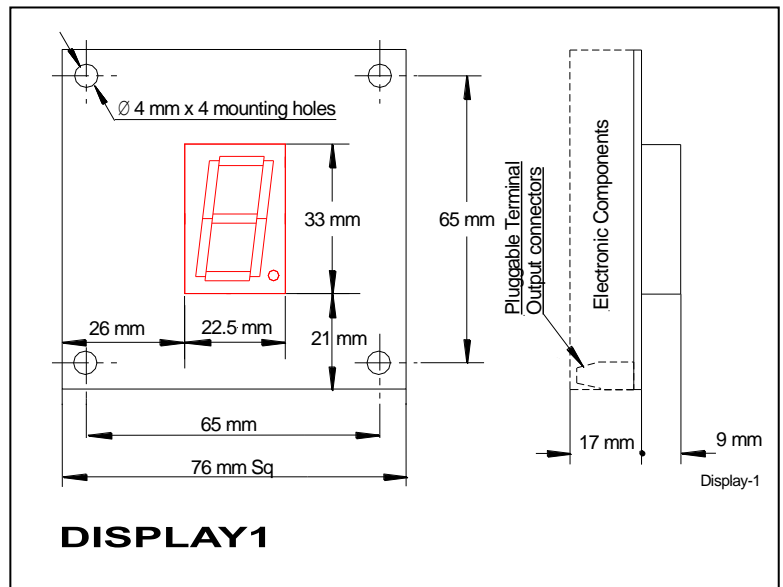
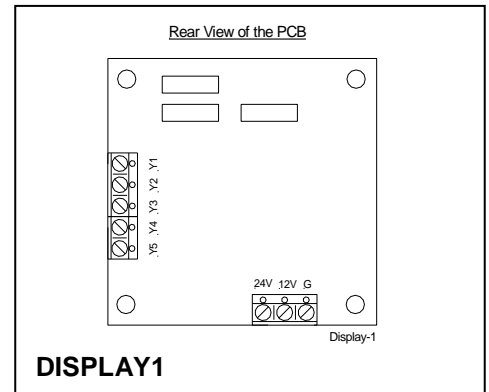
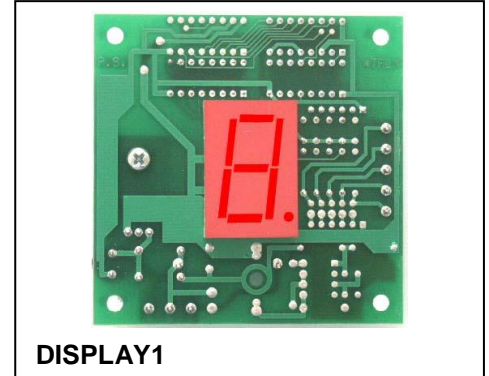
24V : Supply, +24V DCm.

12V : Supply, +12V DCm.

G : 24V Return or 12V Return.

Specifications

Power supply	10 to 30V DCm.
Current consumption	50mA
Signalization	5 wires, Y1 Y5 Binary code.
Display	One digit 7 segments red colored.
Input threshold, all inputs	0V DC - 6V DC = "0" 8V DC-24VDC = "1" High Impedance.
Weight	47 grams.



Ordering Information

DISPLAY1

TAL Engineering Ltd reserves the right to change specifications without notice.

Taleng en PI DISPLAY1 DS v1.01

