

POSITION INDICATOR

DSM2LG

10 x 7 DOTS

DATA SHEET

- ❖ Two Alpha numeric Characters.
- ❖ Scrolling Arrows.
- ❖ Binary or Gray Signalling.
- ❖ Active high or Active low inputs.
- ❖ Scrolling messages.
- ❖ Buzzer.
- ❖ Field Programmable.

Description

The DSM2LG is a two figure Dot Matrix Alphanumeric Position Indicator for elevators that can be used to display position, as well as direction, and programmed messages. The display characters and arrow can be configured to be static or scrolling.

The DSM2LG can be programmed by the user on site or in the laboratory by a handheld programming tool. Multiple DSM2LG units can be programmed simultaneously, even when installed, without disassembling them.

The following scrolling messages are available as standard. (See Table – 1):

1. Elevator overloaded.
2. Elevator out of service.
3. Evacuation control.
4. Fire control.
5. Car preference.
6. Maintenance operations.
7. Doors closing.

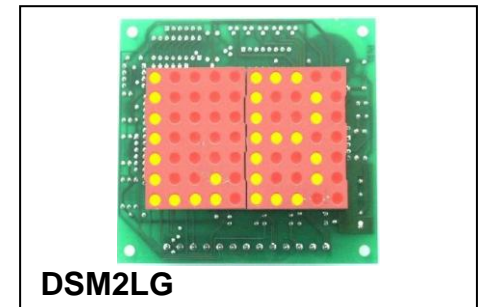
An on board buzzer is included to sound an audible alarm with desired messages, or to act as a passing chime. The dot matrix comes only in red.

Wire connection to DSM2LG:

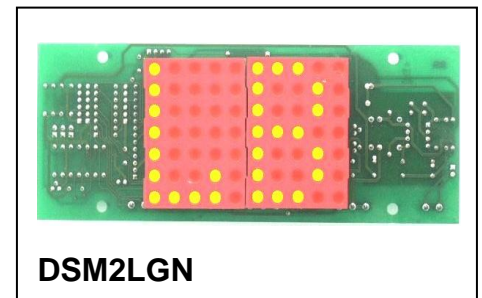
- Y1 ... Y5: Binary or Gray combination for floor display selection.
 A,B,C, : Selection of messages, active low.
 (See Table – 1)
 DI : Down - direction indicator display.
 UI : Up - direction indicator display.
 FL : Arrow control, active low.

Display Modes *

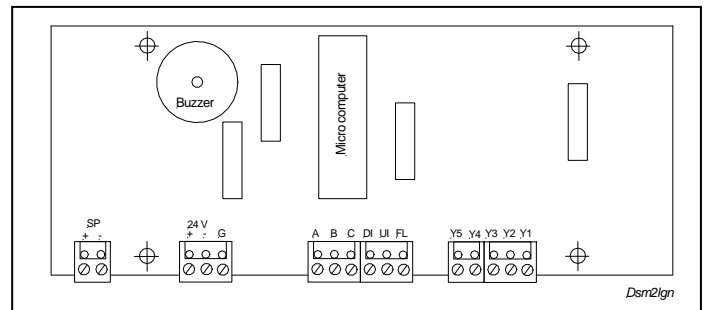
Static digits, No arrows.
Scrolling digits, No arrows.
Scrolling digits, Static arrow shows on left when UI/DI = GND. Note: When arrow shows left digit does not show.
Scrolling digits, Scrolling arrow on left when UI/DI = GND and FL = GND. Note: When arrow shows left digit does not show.
Scrolling digits, Static middle arrow when UI/DI = GND. Note: Middle arrow shows instead of the digits.
Scrolling digits, Static middle arrow when UI/DI = GND, arrow starts scrolling when FL=GND. Note: Middle arrow shows instead of the digits.
Scrolling digits, Static middle arrow when UI/DI = GND and FL = GND. Note: Middle arrow shows instead of the digits.
Scrolling digits, Scrolling middle arrow when UI/DI = GND and FL = GND.
Static middle arrow when UI/DI = GND. No digits will show.
Static middle arrow when UI/DI = GND, scrolling when FL = GND. No digits will show.
Static arrow shows when UI/DI = GND and FL = GND. When both UI and DI = GND, No arrow shows. (This is lantern mode.)



DSM2LG



DSM2LGN



Messages

A	B	C	Description
-	-	-	--
-	-	0	Fire control.
-	0	-	Lift out of service.
0	-	-	Lift overloaded. **
-	0	0	Maintenance operations
0	-	0	Car preference.
0	0	-	Evacuation control. **
0	0	0	Doors closing.

Table - 1

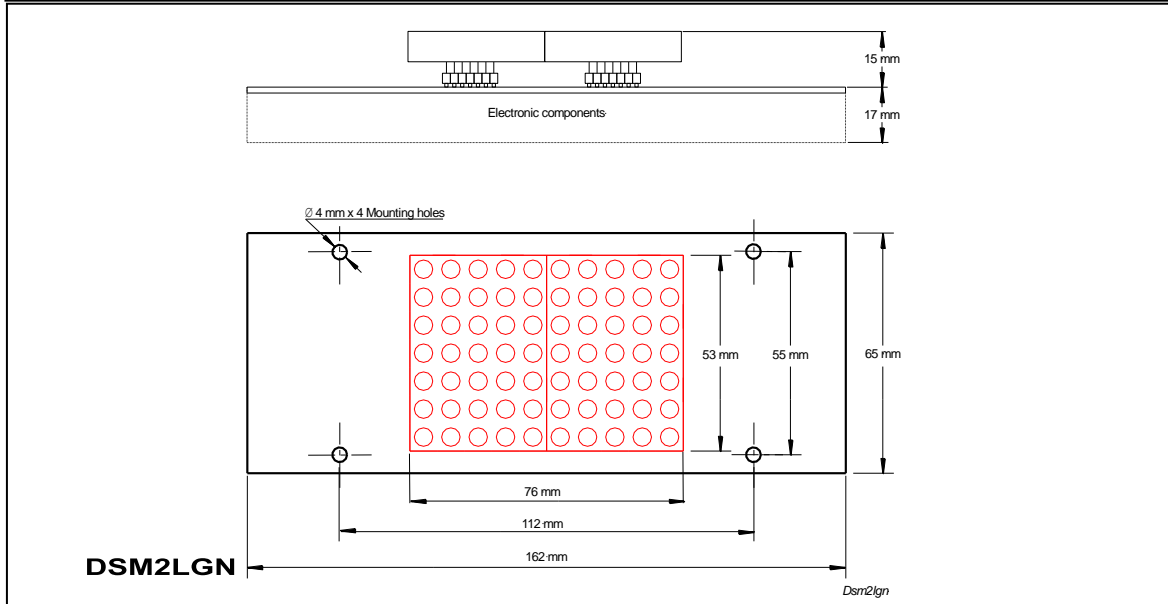
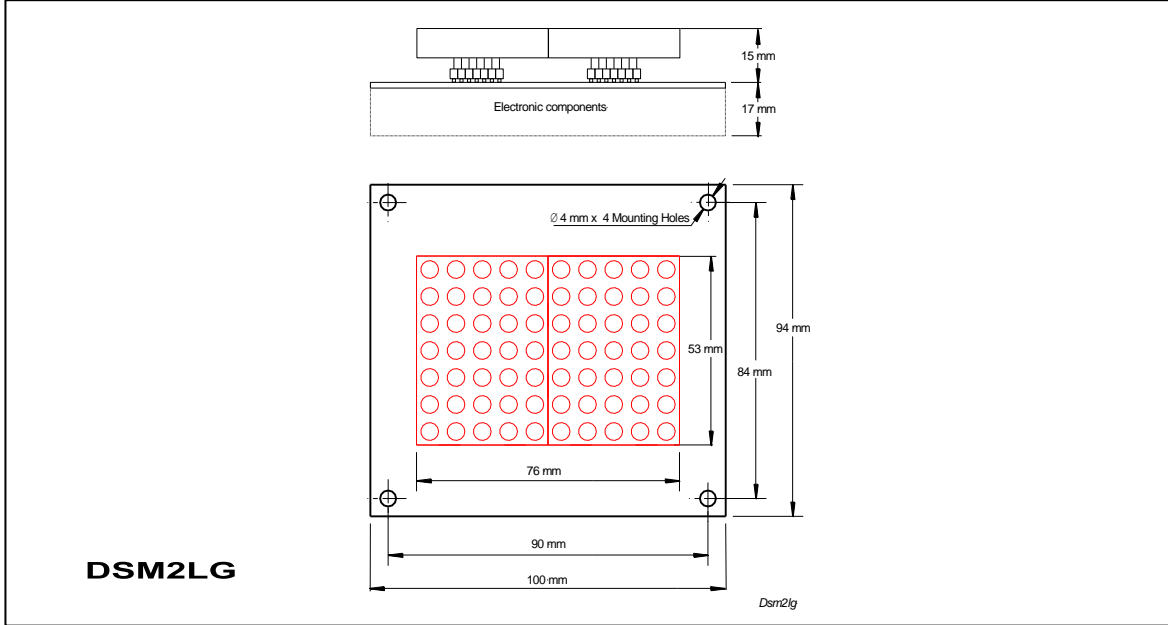
** = Buzzer "-" = Left open
 "0" = GND

* Modes are programmed by programming tool.

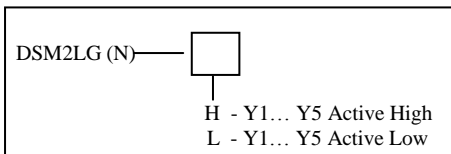


Specifications

Power supply	12V DC – 31V DC.
Current consumption	100mA – 240mA.
Signaling	5 wires, Y1 Y5. Binary code, Gray code, or one wire per floor. For stand-alone operation see the separate data sheet Model: DSM2LG-M. Inputs can be active high (or active low (option)).
Message selection	3 wires, A, B, C, Binary combination. Active low.
Arrow control	3 wires, UI, DI, FL. Active low.
Display	2 dot matrix (10 x 7 dots) 53mm height.
Input threshold, all inputs	0V DC - 6V DC = "0" 7V DC - 24V DC = "1", High Impedance.
Weight	DSM2LG = 110 gr. & DSM2LGN = 110 gr.



Ordering Information



DSM2LG	100mm x 94mm PCB.
DSM2LGN	162mm x 65mm PCB.

